

Material:

Housing: 30% Glass filled PBT UL94V-0.

Contacts: Brass.

Plating: Selective gold plated: gold plated on mating area and nickel plated on wire cutting area.

Electrical Characteristics:

Current Rating: 1 AMP.

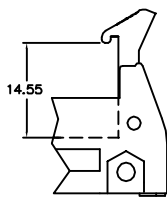
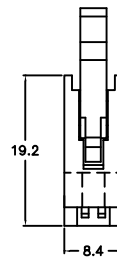
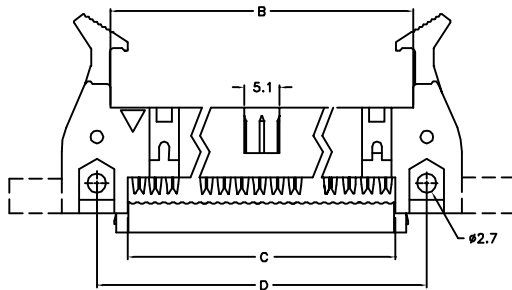
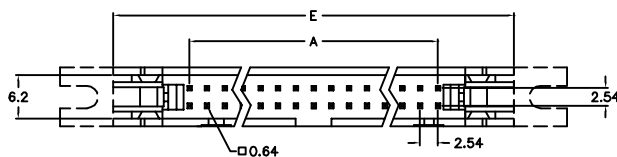
Insulator Resistance: 5000M Ω min. at DC 500V.

Contact Resistance: 20m Ω max. at DC 100mA.

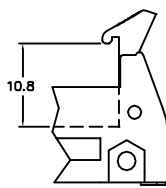
Operating Temperature: -55°C ~ +105°C.

Features:

- * Fully shrouded provides ultimate reliability.
- * Choices of long and short ejectors.
- * Mounting ears optional.



Long Lever



Short Lever

Position	Dimension				
	A	B	C	D	E
10	10.16	18.00	12.64	21.84	31.92
14	15.24	23.08	17.72	26.92	37.00
16	17.78	25.62	20.26	29.46	39.54
20	22.86	30.70	25.34	34.54	44.62
24	27.94	35.78	30.42	39.62	49.70
26	30.48	38.32	32.96	42.16	52.24
30	35.56	43.40	38.04	47.24	57.32
34	40.64	48.48	43.12	52.32	62.40
40	48.26	56.10	50.74	59.94	70.02
50	60.96	68.80	63.44	72.64	82.02
60	73.66	81.50	76.14	85.34	95.42
64	78.74	86.58	81.22	90.42	100.50

Ordering information

BX04- 64 1 Y 1 1
 Series No. of 3: Selective Y: Grey 1: With Mounting Ears 1: With Long Lever
 Pin Count 1: Gold Plated B: Black 2: Without Mounting Ears 2: With Short Lever